

Pre-school
Boys & Girls
104x11'

Meet Pablo

2D animated series with a blend of live action.

A celebration of creativity, individuality and of thinking differently.

5 1/2 year old Pablo uses his magic crayons to bravely turn his life challenges into fantastic adventures and his feelings into colourful characters with a voice in order to face the Real World with confidence.

Pablo is on the autism spectrum.

PANTS



Of course, it's not the crayons that have the real magic. Pablo is smart, creative and loves to draw.

Turning his Real World experiences into 2D animated drawings, Pablo creates a safe place - an Art World of his imagination, where he is able to successfully deal with the challenges that his autism presents in daily life.

PABLO

RADIO



WREN

Excitable Wren channels her energy through her wings. Flapping accentuates her good feelings as well as calming her down when she's frustrated. She often lacks concentration and focus and is easily distracted.

Smart, caring and loyal, Wren is a singer and can sing quite brilliantly for one so small.



ORANGE CRAYON



Meet The Book Animals

The characters in Pablo's drawings reflect aspects of his Real World personality...



TANG

A free spirit with boundless energy, Tang can't control his limbs very well but that does not stop him from loving to dance.

Full of love and kindness, Tang is a hugger but is unable to gauge feelings accurately and his dramatic predisposition can lead to chaos at times.

Tang does not like change, as it makes him feel very anxious.

Noa is a gentle dinosaur who wants everyone to be happy.

When anxiety overwhelms him, he will hum and rock to comfort himself.

Noa finds physical challenges difficult to manage and is often clumsy.

Noa has difficulty reading social cues and facial expressions, which can be very confusing for him.

NOA

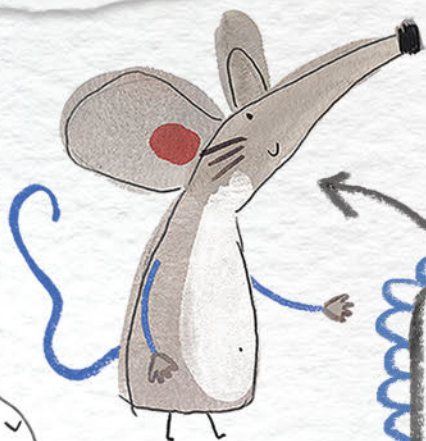


PIZZA

LLAMA

Self-contained and reflective, Llama functions best within the social group by following a strict set of rules.

Careful to protect her personal space, Llama is unable to display physical affection and her enquiring mind means she often becomes totally absorbed in a detail. Llama has echolalia and repeats what people say to help her absorb meaning.



MOUSE

Mouse is a perfectionist and has a need for organisation. When things are untidy or out of sequence Mouse will always try to tidy and sort.

With heightened senses, Mouse sometimes feels the world has its volume turned up and is unable to filter individual sounds efficiently.

Her enhanced sense of smell means that unfamiliar smells can be confusing, but her nose can solve problems too.



sock

DRAFF

Draff lives by facts, timetables and rules. He feels he should have an answer for everything and not knowing the answer makes him anxious. 'In point of fact' and 'actually' are his favourite phrases but his outward bravado covers an inner insecurity which requires reassurance. Fearful and nervous, Draff is not good at group dynamics and often irritates people by correcting them.



Episodes

Pablo explores how young children make sense of the world and the people in it. The first ever children's series to feature an autistic central character, each story reflects the real-life experiences of children with autism and has been devised, co-written and voiced by young autistic talent.



Scaredy Cat



The Party Present



Big Purple Bird

When Pablo is scared by a picture in a café, he draws a confusing world in response and decides it is alright to be a Scaredy Cat as everyone is scared of something.

Nervous about a noisy birthday party, Pablo runs back to the car. Joining him in the Art World, his friends help him realise that a party is just when friends get together.

Pablo and his Mum are getting ready to go to a wedding, when Pablo discovers a big purple creature with feathers on her head and wonders where his Mum has gone.

